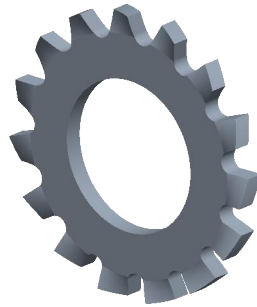

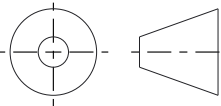


Notes:

1. **For Screw/Bolt Size:** M3
2. **Type:** Star Washer
3. **Form:** Form A
4. **Material:** HV 140 Steel
5. **Finish:** Zinc Plated
6. **Thickness:** 0.4mm
7. **Inner Diameter:** 3.2mm
8. **Outer Diameter:** 6mm
9. **Measurement System:** Metric
10. **Height:** 0.8mm
11. **Specification:** DIN 6797-A



 http://localhost:3654		THIRD ANGLE PROJECTION 	
<p>This file and the related information are provided for reference only and may change without notice. FIND 3D CAD does not guarantee the accuracy, completeness, or suitability of this file or the information provided. You are responsible for how you use this file and its information.</p>		<p>This document is the property of FIND 3D CAD. The information in it may not be copied, shared, or given to any third party without written permission from FIND 3D CAD.</p>	
DESCRIPTION Toothed Star Lock Washer External DIN 6797-A Steel, Finishes Vary		TITLE Star Washer	
Sheet Size	PART NUMBER	Rev.	ISSUED
A	V3D-WSE3CLZ	01	2026-06-09
SCALE: 11.642		Unless otherwise specified Dimensions are in MILLIMETERS	