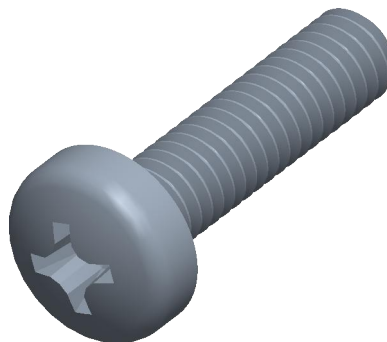

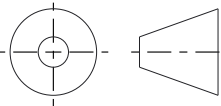


Notes:

1. **Specification:** DIN 7985
2. **Thread Diameter + Pitch:** M2.5X0.45
3. **Length:** 10mm
4. **Thread Amount:** Full Thread
5. **Material:** Class 4.8 Steel
6. **Finish:** Zinc Plated
7. **Head Diameter:** 5mm
8. **Head Height:** 2mm
9. **Drive:** H1 / Phillips #1
10. **Type Screw/Bolt:** Pan Head Machine Bolt/Screw
11. **Thread Direction:** Right Hand
12. **Measurement System:** Metric



| | | | |
|--|---------------|--|------------|
|  find3dcad.com | | THIRD ANGLE PROJECTION  | |
| <p>This file and the related information are provided for reference only and may change without notice. FIND 3D CAD does not guarantee the accuracy, completeness, or suitability of this file or the information provided. You are responsible for how you use this file and its information.</p> | | <p>This document is the property of FIND 3D CAD. The information in it may not be copied, shared, or given to any third party without written permission from FIND 3D CAD.</p> | |
| DESCRIPTION Pan Head Machine Bolt Steel Class 4.8 Zinc DIN 7985 | | TITLE Pan Head Machine Bolt | |
| Sheet Size | PART NUMBER | Rev. | ISSUED |
| A | PHM-2-5X10CLZ | 01 | 2026-06-13 |
| SCALE: 9.338 | | Unless otherwise specified Dimensions are in MILLIMETERS | |