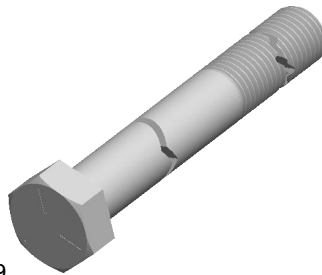

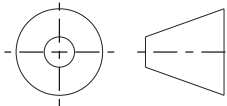


**Notes :**

1. Category: Cap Screws
2. System of Measurement: Inch
3. Head Style: Hex Head
4. Head Style Detail: Washer Face
5. Drive Style: External Hex Drive
6. Pitch: UNC Coarse Thread
7. Thread Direction: Right-Hand Thread
8. Point: Chamfered Point
9. Material: Stainless Steel
10. Material Grade: 18-8 Stainless Steel
11. Standards and Specifications: ASME B18.2.1 and SAE J429
12. Diameter: 1-1/2"
13. Length: 10"



 <a href="http://find3dcad.com">find3dcad.com</a>		<b>THIRD ANGLE PROJECTION</b> 	
<p>This file and the related information are provided for reference only and may change without notice. FIND 3D CAD does not guarantee the accuracy, completeness, or suitability of this file or the information provided. You are responsible for how you use this file and its information.</p>		<p>This document is the property of FIND 3D CAD. The information in it may not be copied, shared, or given to any third party without written permission from FIND 3D CAD.</p>	
<b>DESCRIPTION</b> Inch Cap Screw UNC Coarse Thread, Grade 5 Steel, Zinc, Made in U.S.A.		<b>TITLE</b> <b>Inch Cap Screw</b>	
Sheet Size	PART NUMBER	Rev.	ISSUED
<b>A</b>	<b>HHCS-1126X10</b>	<b>01</b>	<b>2026-06-13</b>
SCALE: 0.555		Unless otherwise specified Dimensions are in INCHES	