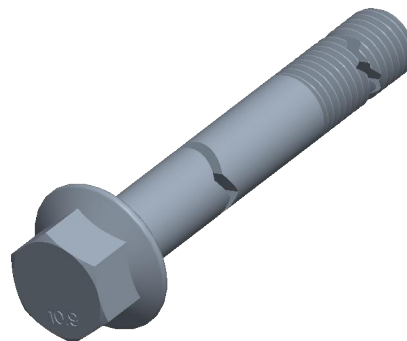

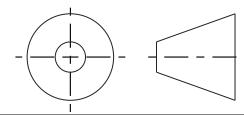


Notes:

1. **Specification:** JIS B1189
2. **Thread Diameter + Pitch:** M10X1.25
3. **Length:** 100mm
4. **Thread Amount:** Partial Thread
5. **Threaded Length:** 30mm +/- 3mm
6. **Unthreaded Length:** 70mm +/- 3mm
7. **Material:** Class 10.9 Steel
8. **Finish:** Zinc Plated
9. **Flange Type:** Smooth
10. **Flange Width:** 21mm
11. **Head Height:** 10mm
12. **Drive:** 14mm Wrench
13. **Type Screw/Bolt:** Hex Flange Head
14. **Thread Direction:** Right Hand
15. **Measurement System:** Metric



 find3dcad.com		THIRD ANGLE PROJECTION 	
<p>This file and the related information are provided for reference only and may change without notice. FIND 3D CAD does not guarantee the accuracy, completeness, or suitability of this file or the information provided. You are responsible for how you use this file and its information.</p>		<p>This document is the property of FIND 3D CAD. The information in it may not be copied, shared, or given to any third party without written permission from FIND 3D CAD.</p>	
DESCRIPTION Hex Flange Head Steel Class 10.9 Zinc JIS B-1189 / 14mm Wrench		TITLE Hex Flange Head	
Sheet Size	PART NUMBER	Rev.	ISSUED
A	HTH-10X1-25X100PCLZ	01	2026-06-13
SCALE: 1.754		Unless otherwise specified Dimensions are in MILLIMETERS	