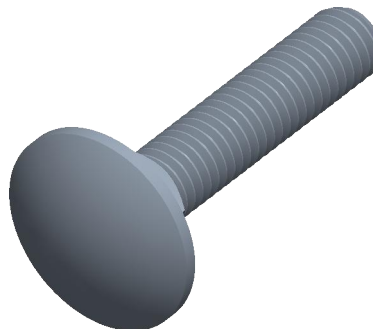

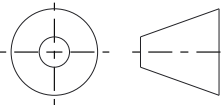


Notes:

1. **Specification:** DIN 603
2. **Thread Diameter + Pitch:** M5X0.8
3. **Length:** 25mm
4. **Thread Amount:** Full Thread
5. **Material:** Class 4.6 Steel
6. **Finish:** Zinc Plated
7. **Collar Height:** 4.1mm
8. **Collar Diameter:** 5.5mm
9. **Head Diameter:** 13.55mm
10. **Head Height:** 3.3mm
11. **Type Screw/Bolt:** Carriage Bolt/Screw
12. **Thread Direction:** Right Hand
13. **Measurement System:** Metric



 <a href="http://find3dcad.com">find3dcad.com</a>		<b>THIRD ANGLE PROJECTION</b> 	
<p>This file and the related information are provided for reference only and may change without notice. FIND 3D CAD does not guarantee the accuracy, completeness, or suitability of this file or the information provided. You are responsible for how you use this file and its information.</p>		<p>This document is the property of FIND 3D CAD. The information in it may not be copied, shared, or given to any third party without written permission from FIND 3D CAD.</p>	
<b>DESCRIPTION</b> Carriage Bolt Steel Class 4.6 Zinc DIN 603		<b>TITLE</b> Carriage Bolt	
Sheet Size	PART NUMBER	Rev.	ISSUED
<b>A</b>	CB-5X25CLZ	01	2026-06-09
SCALE: 3.793		Unless otherwise specified Dimensions are in MILLIMETERS	