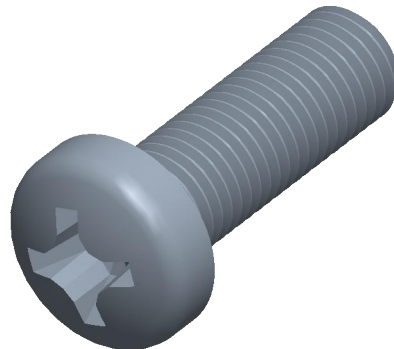

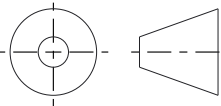


Notes:

1. **Specification:** JIS B1111
2. **Thread Diameter + Pitch:** M4X0.5
3. **Length:** 12mm
4. **Thread Amount:** Full Thread
5. **Material:** Class 4.8 Steel
6. **Finish:** Yellow Zinc Plated
7. **Head Diameter:** 7mm
8. **Head Height:** 2.75mm
9. **Drive:** H2 / Phillips #2
10. **Type Screw/Bolt:** JIS Small Pan Head Bolt/Screw
11. **Thread Direction:** Right Hand
12. **Measurement System:** Metric



 https://test.find3dcad.com/		THIRD ANGLE PROJECTION 	
<p>This file and the related information are provided for reference only and may change without notice. FIND 3D CAD does not guarantee the accuracy, completeness, or suitability of this file or the information provided. You are responsible for how you use this file and its information.</p>		<p>This document is the property of FIND 3D CAD. The information in it may not be copied, shared, or given to any third party without written permission from FIND 3D CAD.</p>	
DESCRIPTION M4X0.5 FINE Small Pan Head Steel Class 4.8 Yellow Zinc JIS B-1111 Phillips		TITLE Small Pan Head Screws	
Sheet Size	PART NUMBER	Rev.	ISSUED
A	V3D-MSPSH4X0.5X12YLW	01	2026-06-09
SCALE: 7.299		Unless otherwise specified Dimensions are in MILLIMETERS	