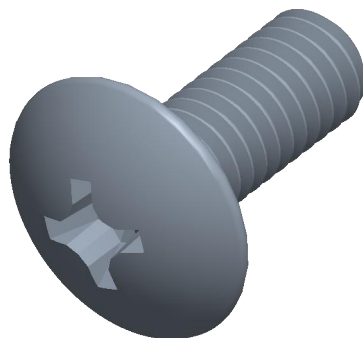

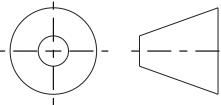


Notes:

1. **Specification:** JIS B1111
2. **Thread Diameter + Pitch:** M4X0.7
3. **Length:** 10mm
4. **Thread Amount:** Full Thread
5. **Material:** Class 4.8 Steel
6. **Finish:** Zinc Plated
7. **Head Diameter:** 9.4mm
8. **Head Height:** 2.5mm
9. **Drive:** H2 / Phillips #2
10. **Type Screw/Bolt:** Truss Head Machine Bolt/Screw
11. **Thread Direction:** Right Hand
12. **Measurement System:** Metric



		<b>THIRD ANGLE PROJECTION</b> 	
<p>This file and the related information are provided for reference only and may change without notice. does not guarantee the accuracy, completeness, or suitability of this file or the information provided. You are responsible for how you use this file and its information.</p>		<p>This document is the property of . The information in it may not be copied, shared, or given to any third party without written permission from .</p>	
<b>DESCRIPTION</b> M4 Phillips Truss Head Steel 4.8, Zinc Plated JIS B-1111		<b>TITLE</b> <b>Truss Head Screws</b>	
Sheet Size	PART NUMBER	Rev.	ISSUED
<b>A</b>	V3D-SLH4X10CLZ		2026-06-15
SCALE: 7.249		Unless otherwise specified Dimensions are in MILLIMETERS	