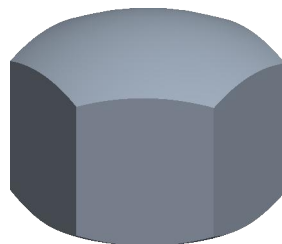

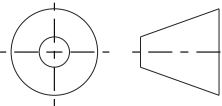


Notes:

1. **Thread Diameter + Pitch:** M4X0.7
2. **Thread Direction:** Right Hand
3. **Type:** Cap Nut
4. **Material:** Class 6 Steel
5. **Finish:** Zinc Plated
6. **Drive:** 7mm Wrench
7. **Internal Thread Depth:** 4.16mm
8. **Height:** 5.5mm
9. **Profile:** Normal
10. **Measurement System:** Metric
11. **Specification:** DIN 917



 <a href="https://test.find3dcad.com/">https://test.find3dcad.com/</a>		<b>THIRD ANGLE PROJECTION</b> 	
This file and the related information are provided for reference only and may change without notice. FIND 3D CAD does not guarantee the accuracy, completeness, or suitability of this file or the information provided. You are responsible for how you use this file and its information.		This document is the property of FIND 3D CAD. The information in it may not be copied, shared, or given to any third party without written permission from FIND 3D CAD.	
<b>DESCRIPTION</b> Cap Nut Coarse Steel Class 6 Zinc DIN 917		<b>TITLE</b> Cap Nut	
Sheet Size	PART NUMBER	Rev.	ISSUED
<b>A</b>	MDCN4CLZ	01	2026-06-10
SCALE: 7.856		Unless otherwise specified Dimensions are in MILLIMETERS	