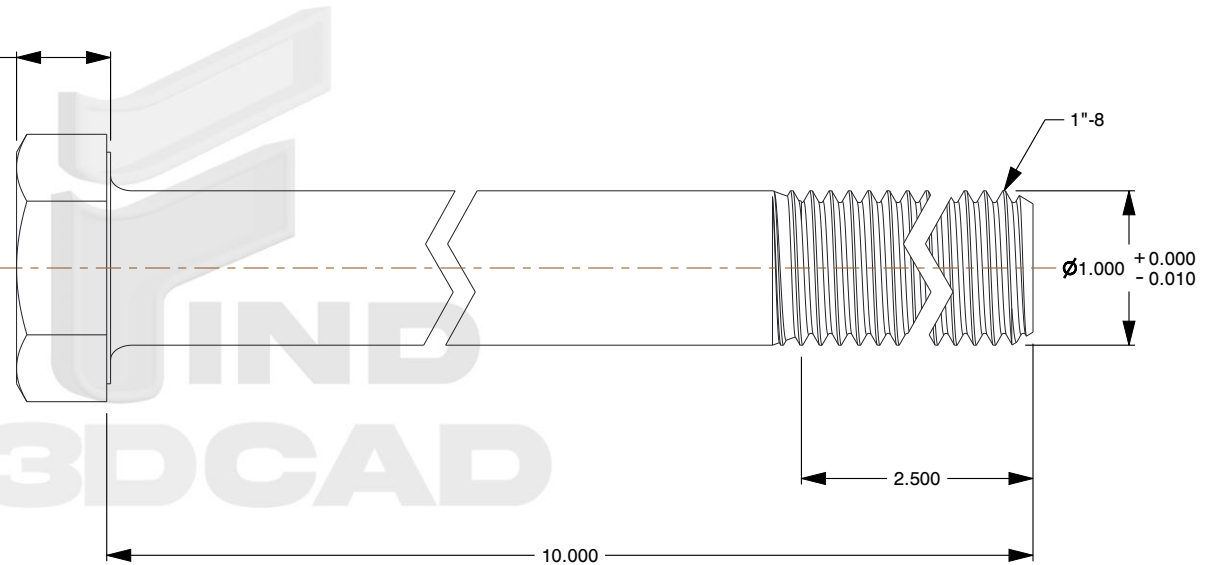
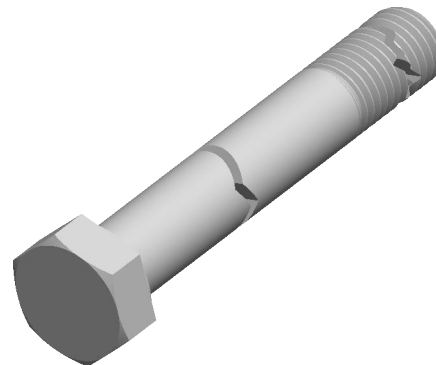



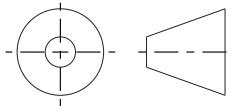
0.609 $\begin{matrix} +0.018 \\ -0.018 \end{matrix}$



Notes:

1. **Category:** Cap Screws
2. **System of Measurement:** Inch
3. **Head Style:** Hex Head
4. **Head Style Detail:** Washer Face
5. **Drive Style:** External Hex Drive
6. **Thread Direction:** Right-Hand Thread
7. **Point:** Chamfered Point
8. **Material:** Stainless Steel
9. **Material Grade:** AISI 316 Stainless Steel
10. **Coating:** Uncoated
11. **Standards and Specifications:** ASME B18.2.1



 https://test.find3dcad.com/		THIRD ANGLE PROJECTION 	
This file and the related information are provided for reference only and may change without notice. FIND 3D CAD does not guarantee the accuracy, completeness, or suitability of this file or the information provided. You are responsible for how you use this file and its information.		This document is the property of FIND 3D CAD. The information in it may not be copied, shared, or given to any third party without written permission from FIND 3D CAD.	
DESCRIPTION 1"-8 X 10" Hex Head Cap Screws Bolts, AISI 316 Stainless Steel		TITLE Hex Cap Screw	
Sheet Size	PART NUMBER	Rev.	ISSUED
A	V3D-ST007-18X10	01	2026-06-04
SCALE: 0.804		Unless otherwise specified Dimensions are in INCHES	