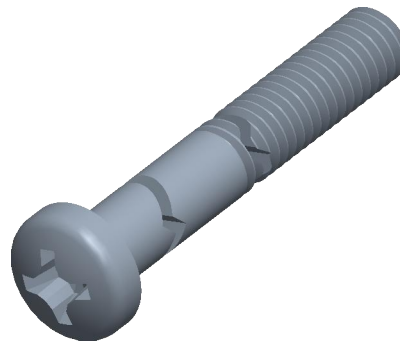

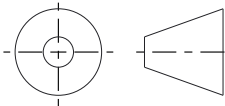


Notes:

1. **Specification:** JIS B1111
2. **Thread Diameter + Pitch:** M6X1.0
3. **Length:** 125mm
4. **Thread Amount:** Partial Thread
5. **Threaded Length:** 100mm +/- 5mm
6. **Material:** Class 4.6 Steel
7. **Finish:** Zinc Plated
8. **Head Diameter:** 10.5mm
9. **Head Height:** 3.9mm
10. **Drive:** H3 / Phillips #3
11. **Type Screw/Bolt:** Pan Head Bolt/Screw
12. **Thread Direction:** Right Hand
13. **Measurement System:** Metric



 find3dcad.com		THIRD ANGLE PROJECTION 	
<p>This file and the related information are provided for reference only and may change without notice. FIND 3D CAD does not guarantee the accuracy, completeness, or suitability of this file or the information provided. You are responsible for how you use this file and its information.</p>		<p>This document is the property of FIND 3D CAD. The information in it may not be copied, shared, or given to any third party without written permission from FIND 3D CAD.</p>	
DESCRIPTION Pan Head Bolt Steel Class 4.6 Zinc JIS B1111 Furniture		TITLE Pan Head Bolt	
Sheet Size	PART NUMBER	Rev.	ISSUED
A	PH-6X125PCLZ	01	2026-06-09
SCALE: 3.150		Unless otherwise specified Dimensions are in MILLIMETERS	